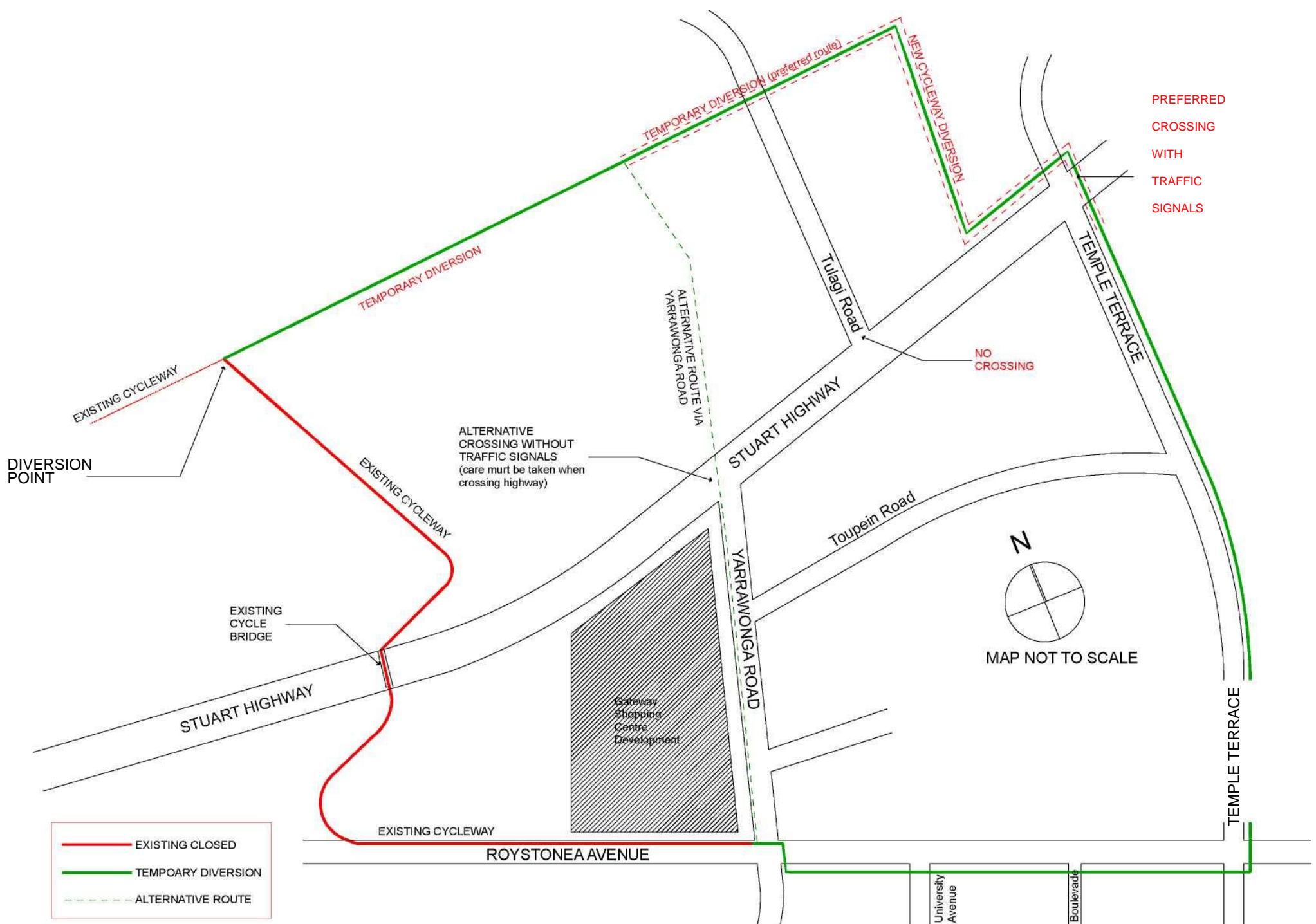


TEMPORARY CYCLEWAY DIVERSION at PALMERSTON

The Midpul Cycle Bridge shall be closed from Monday 6 February 2017 until Monday 20 March 2017. During this period, all cyclists and pedestrians are encouraged to utilise the newly constructed Temple Terrace Intersection. The intersection provides a safe means of crossing the busy Stuart Highway. See the below detour map.



For more information please contact BMD Urban on 8930 4405

PLEASE REFER TO SIGNS ON CYCLEWAY